

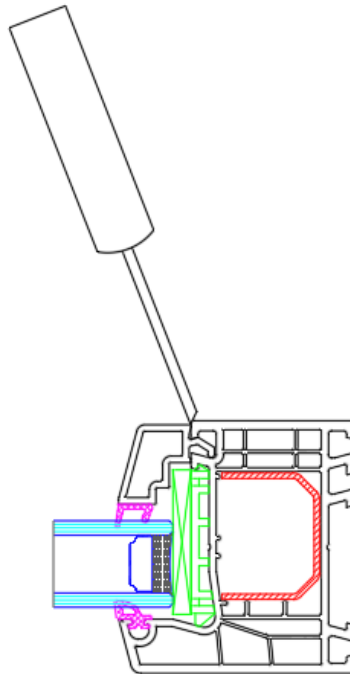
Slider Door Transom Connection Field Assembly Instructions

Window Preparation:

1. De-glaze the transom window using a 1" rigid flat tool. (1-1 1/2" chisel putty knife, shown, is available at Home Depot. Store SKU: 720808)



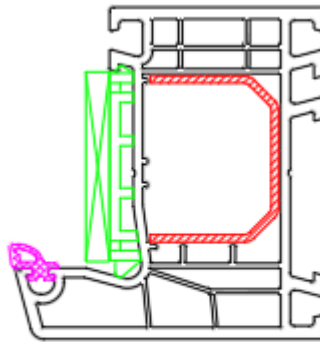
2. Start from the middle of the longest glaze bead and work your way towards the corners.



FRAME 1

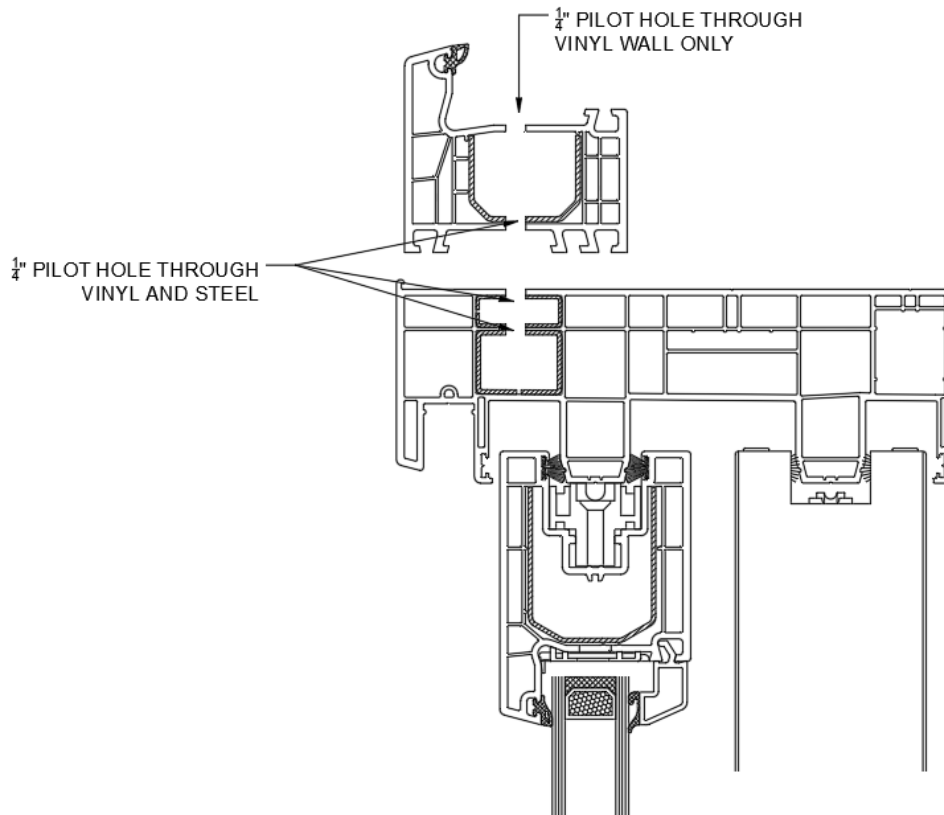
3. Place the glass in a safe place. Ensure the edges of the glass are supported or are sitting on soft material like rigid foam or wood. DO NOT PLACE GLASS DIRECTLY ON CONCRETE OR AGAINST METAL STUDS.

The frame should look like the picture below:

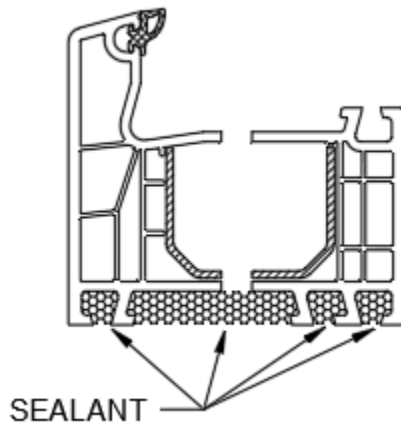


FRAME 1

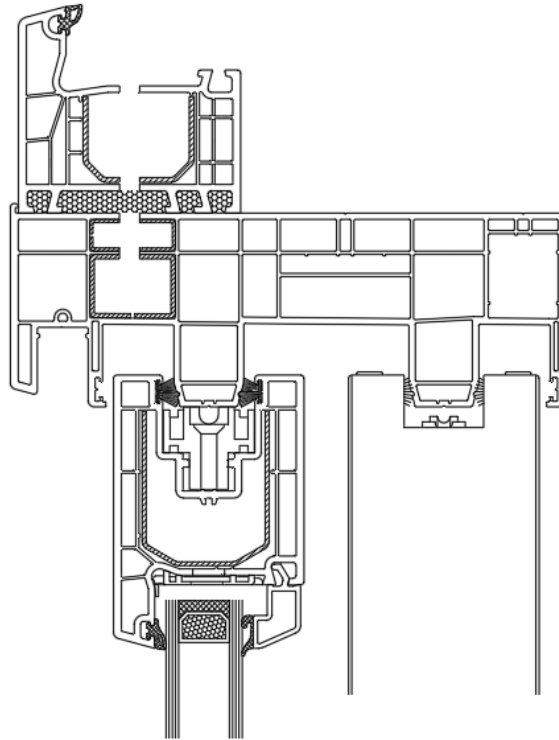
4. Position the transom above the slider door. Drill pilot holes as shown in the diagram below through the frame and the first two chambers of the slider door. Please pay attention to the hole size required. The holes should be drilled 6" from the corners and 18" on center.



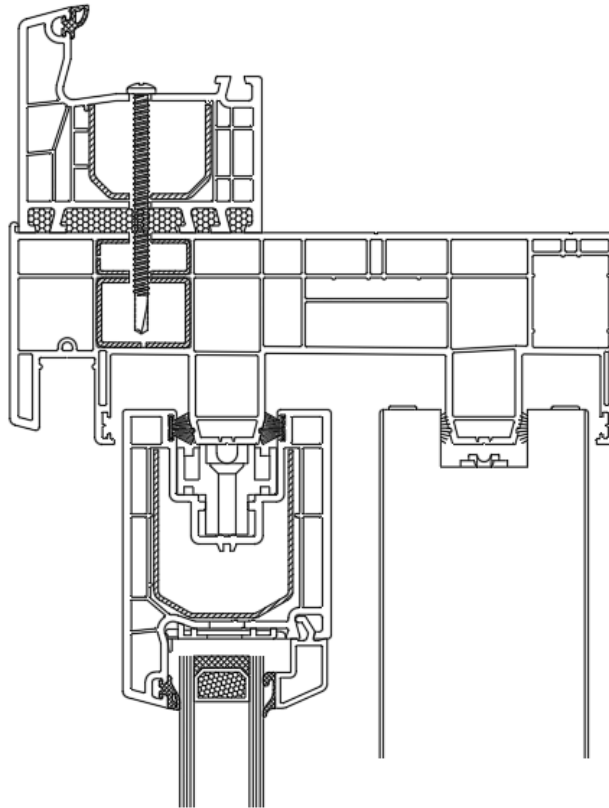
5. Use the GE 1000 Sealant to apply a continuous bead of sealant in the grooves of the sill of the transom window.



6. Place the transom onto the slider door head. Ensure that there is no gap between the transom and the slider door frame.

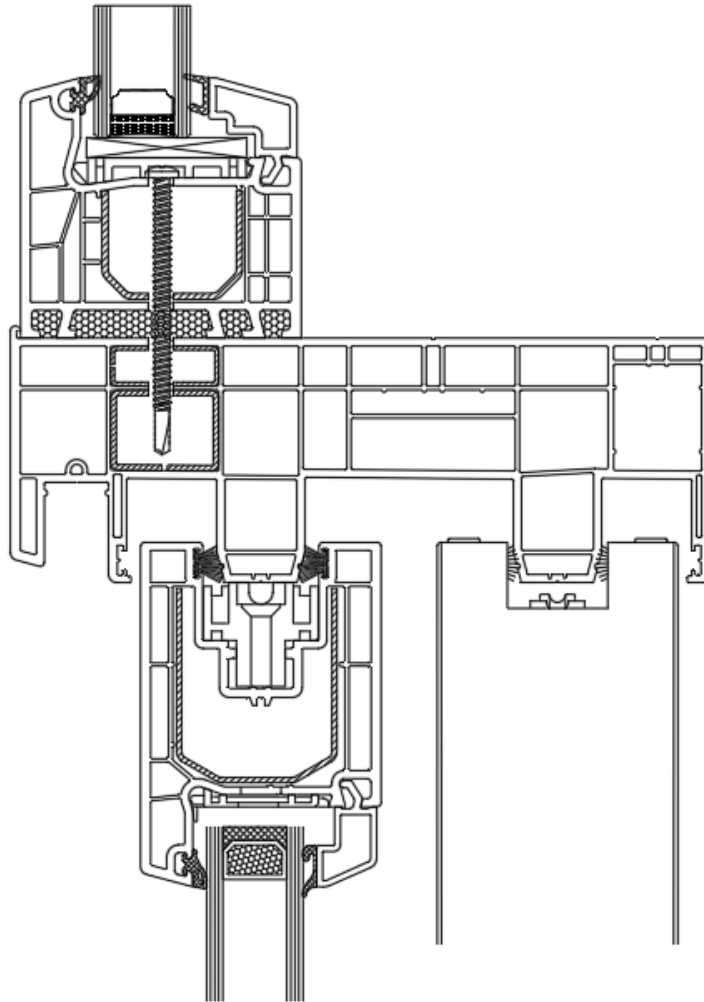


7. Ensure the transom is level on the slider door.
8. Use a #10 2 3/4" self-drilling screw to fasten the transom and slider door together.



9. Replace the glass and reinstall the glaze bead starting with the shortest followed by the longest lengths. Push in the corners first, then tap the glaze bead into place with a 12-ounce double-face soft hammer (available at Home Depot, Store SKU: 806699).





10. Prepare slider door with transom for installation by attaching installation clips or preparing nailfin. Be careful when moving the assembled unit around.